

TRAVEL OUTSIDE THE LINES

WRANGELL

ALASKA



THE 2024-25 OFFICIAL TRAVEL GUIDE

WELCOME TO WRANGELL

The homeland of the Shtax'héen Kwáan Tlingit of Southeast Alaska. We are able to share Wrangell's wonders with you because of the stewardship of the Tlingit people, who have lived here since time immemorial. It is important to us to pay our respect while offering to build mutual understanding across cultures. The Tlingit are guided by four ancient values that remain central today:

- **Haa Aaní** (protecting and honoring the land): The Tlingit believe that everything has a spirit, including the animals and trees. In utilizing resources, the Tlingit acknowledge the spirits of the land, sea, and air.
- **Haa Latseení** (strength of body, mind, and spirit): Young Tlingit men and women are taught to achieve physical and inner strength, protect and care for their community, seek truth and knowledge, and adapt to changing times while maintaining the integrity of ancient values.
- **Haa Shuká** (honoring ancestors and future generations): The Tlingit maintain strong bonds with their ancestors, whom they honor in their daily lives and ceremonies. They also protect their land and culture for their children and grandchildren and those who follow them.
- **Wooch Yáx** (maintaining social and spiritual balance and harmony): This value guides relationships with others and includes *kaa yáa awuné* (respect for others) and *at yáa awuné* (respect for all things).

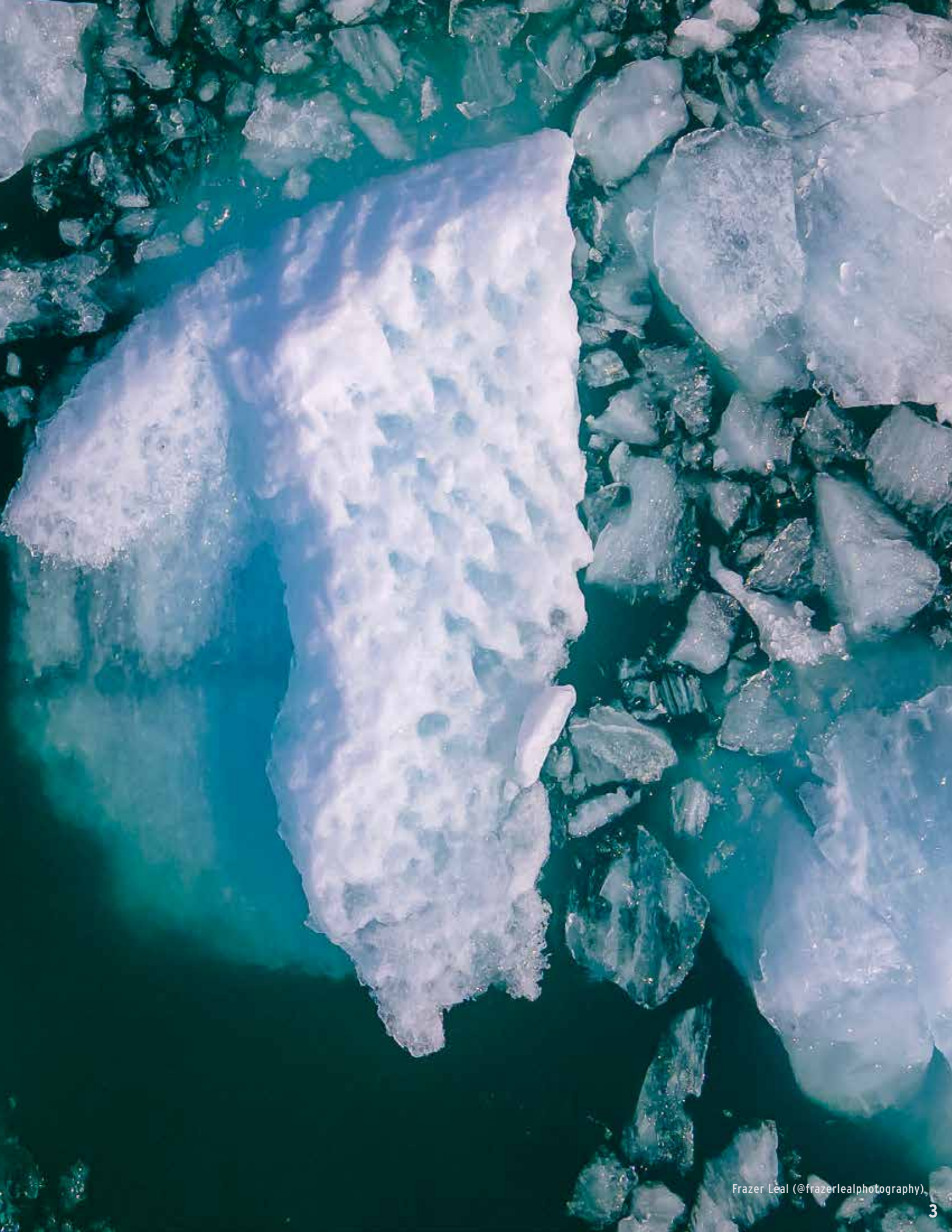


TABLE OF CONTENTS



Petroglyph Beach, Page 34



The Stikine River & Shakes Lake, Page 14



Anan Bear Observatory, Page 20

06

DISCOVER WRANGELL

AN OVERVIEW, WRANGELL HISTORY,
HOW TO GET HERE

38

MORE ABOUT WRANGELL

BEARFEST, GARNETS & MORE...

14

THINGS TO DO

ANAN BEARS, THE STIKINE RIVER,
GOLFING, FISHING, HIKING & BIRDING

47

MAPS & DIRECTORIES

ISLAND MAP, DOWNTOWN MAP, BOAT
CHARTER & BUSINESS DIRECTORY

32

WRANGELL'S CULTURE

TOTEM HISTORY, PETROGLYPH BEACH,
THE JAMES & ELSIE NOLAN CENTER

This guide has been created and published in partnership with Travel Wrangell and the Wrangell Sentinel.

No part of the Wrangell guide may be reproduced or used without the written permission of the Wrangell Sentinel and Travel Wrangell.

Cover Photo: Mike K Photography (@klawsterman)



DISCOVER WHAT LIES *OUTSIDE THE LINES*

Wrangell, one of the most historic communities in Alaska, is the only town in the state to have been ruled by four nations: Tlingit, Russia, the United Kingdom and the United States.

It has the reputation for being the “friendliest little town in Southeast Alaska.”

It’s also one of the hardest-working towns in the state.

The maritime industry is Wrangell’s largest economic driver, which includes commercial fishing. The Marine Service Center is a thriving boat works facility for commercial and recreational vessels. Its boat lifts provide haul-out capabilities and skilled workers provide quality services known throughout Southeast Alaska.

The second-largest private-sector industry in the town of about 2,000 people is tourism, which is gaining in strength as more people discover the region’s attractions and smaller, higher-end cruise ships add Wrangell to their itineraries.

About 30,000 visitors are expected in town in 2024 by boat and airplane.

Wrangell’s \$30 million medical center, owned and operated by the SouthEast Alaska Regional Health Consortium, opened in 2021 and is a leading employer and active in promoting a healthy community.

The borough government - similar to a county in the rest of the country - provides electrical, water, sewage and trash services. Power comes from a hydroelectric station across the channel on the mainland.

Located in the middle of the Tongass National Forest, Wrangell has a mild climate with temperatures infrequently dipping into a hard freeze in the winter. Rain is more common than snow, and summer temperatures range anywhere from the mid-50s to the mid-70s.

Wrangell is 750 air miles north of Seattle, 85 miles north of Ketchikan and 150 miles south of Juneau, the state capital. It sits near the delta of the Stikine River, an important resource in the lives of those who live here for recreation, commerce and subsistence.

Next door is neighboring British Columbia, the westernmost province of Canada. On a clear day you can see the majestic, snow-capped mountains to the north and east of Wrangell Island. The border is only hours away by boat up the Stikine River or even closer by plane.

The town’s economy suffered a painful hit in the 1990s and the next decade with constraints on the timber industry and eventual closure of the town’s two sawmills. But people have worked hard to overcome that loss, and the region now focuses on sport, charter and commercial

(Continued on Page 8)





fishing; expansion of its tourism industry (in particular promoting the Anan Wildlife Observatory and its world-famous bear viewing); and health care services.

Salmon is the major catch for the town's commercial fishing fleet, along with halibut, shrimp and crab. Seafood processors freeze and pack the catch for markets, and fishermen have been known to sell their catch to residents or visitors on the docks. You can enjoy some of the freshest seafood you'll ever taste!

Wrangell shrimp are famous for their delectable flavor. From large, luscious prawns to the small salad variety, the shrimp are a treat no one should miss. Local restaurants feature shrimp in dinners and salads. Shrimp are also sold by local fishermen and processors and packaged for shipping.

Everyone in town is an unofficial greeter. Don't hesitate to ask if you need help.

Wrangell Museum

Presenting the Culture, Heritage & People of Wrangell, Alaska

Summer Hours:
April 1 - Sept. 30
Monday - Saturday,
9am - 5pm

Movie Theater

Video theater showing recent box office hits

Open: Friday & Saturday - 7 pm
Sunday - 4 pm



Civic Center

The perfect location for hosting conventions & special events

**Meeting Rooms,
 Classrooms,
 Convention Hall,
 Kitchen**

Visitor Center

Accommodating our visitors with a large interactive map

**Unique Gift Store • Souvenirs
 Huge Selection of Books • Local Art**

296 Campbell Dr. • 907-874-3770 or 907-874-3699 • www.nolancenter.org

Want to know even more about Wrangell?

SUBSCRIBE
 to the Sentinel today
 by calling Amber at
907-874-2301
 or visit wrangellsentinel.com/subscribe



SCAN HERE

WRANGELL WEATHER

Average Daylight: Hours

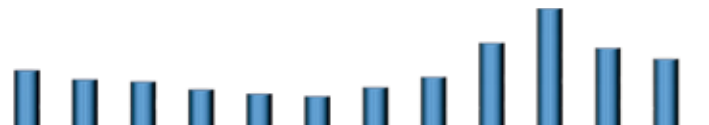
7 10 13 14 17 19 17 16 13 10 9 8

JAN FEB MAR APR MAY JUN JUL AUG SEP OCT NOV DEC

Average High Temperature: °F

34 38 42 49 56 62 64 63 58 49 41 36

JAN FEB MAR APR MAY JUN JUL AUG SEP OCT NOV DEC



Average Monthly Precipitation: Inches

6.9 5.4 5.2 4.6 4.6 3.9 4.5 5.6 9.3 12.8 8.6 7.9

JAN FEB MAR APR MAY JUN JUL AUG SEP OCT NOV DEC

River's Mouth Trading Company

Beautiful ★ Useful ★ Fun

Locally made jam, tea, candles, soaps and lotions. Plus crystals, jewelry, plants, home goods and more!



321 Front Street • www.riversmouth.com



HOW TO GET HERE

Even though there are no roads to Wrangell, it's easy to get here.

The town is served by daily jet service and state ferries on regular schedules, and also by charter flights and charter boats for travelers who want to set their own schedules.

Alaska Airlines flies a Boeing 737 north from Seattle via Ketchikan seven days a week, arriving in Wrangell mid- to late-morning on its way to Petersburg, Juneau and then Anchorage. Another Alaska Airlines flight repeats the same routing southbound in the afternoon, also seven days a week.

Sunrise Aviation offers charter flights and sightseeing services throughout Southeast Alaska to match the passengers' schedules to almost any destination.

The Wrangell airport, about 1.5 miles north of town, has modern navigational aids for when cloud cover gets heavy. Rental cars are available across from the Alaska Airlines terminal, and taxis are only a phone call away.

The state ferries of the Alaska Marine Highway System serve Wrangell northbound on a weekly run from Bellingham, Washington, via Ketchikan. The ferries stop back in Wrangell on a weekly southbound run from Skagway, Haines, Juneau and Petersburg, on their way back to Bellingham.

The ferry run to Haines and Skagway gives travelers a connection to the Alaska Highway in and out of the state through Canada, rather than getting on the road out of Bellingham, north of Seattle.

The ferry schedule changes seasonally, and ticket prices can change too, so book early, especially to reserve space for your vehicle or a stateroom - though staterooms are not required and travelers can spend their voyage on the deck or enjoying the indoor seating areas.

The state ferry terminal is about a block north of the Stikine Inn downtown.



WRANGELL'S HISTORY

A BRIEF OVERVIEW



Front Street in Downtown Wrangell circa 1930.



RUSSIAN, BRITISH AND U.S. CONTROL MADE FOR A BUSY 1800S

Thousands of years before fur, gold, salmon and timber brought settlers, adventurers and pioneers to work and live in Wrangell, the Tlingit people arrived in the region via the Stikine River, migrating from the Interior.

In Nora Marks and Richard Dauenhauer's 1987 book of Tlingit storytelling, "Haa Shuká, Our Ancestors," Robert Zuboff (Kak'weidí Clan, Kaakáakw Hít) recounted in a 1960s interview the story of how Indigenous people long ago discovered that the Stikine flowed under a glacier. So, they tied a raft together and put two elderly women on the raft and pushed them under the glacier.

The story goes on to say that others were afraid to float under the glacier, so they traveled over it.

Regardless of whether the first arrivals floated under the glacier, walked over it or paddled down the river when it was navigable, the Stikine has been the dominating force in Wrangell's story since before recorded history. The town is proud of its name: Gateway to the Stikine.

The Russian American Co. decided 200 years ago to take a serious look at the river, particularly its value as a direct trade route to the fur resources of the Canadian Interior.

Coastal Alaska Natives had long been trading with the Interior tribes, and in about 1811 the Russians began trading with the Stikine Tlingit near the site of present-day Wrangell. With its New World headquarters at Sitka, the Russian American Co. ruled the fur trade of Alaska.

But its hold was soon challenged by the British Hudson's Bay Co., and the showdown between the two commercial giants, each with a vast network of trade stretching across entire hemispheres, was to be played out in a remote and obscure corner of the wild now known as Wrangell Island.

A treaty signed between the two nations in 1824-25 granted the British the right to use navigable streams along the coast crossing Russian territory on their way from the Interior to the sea, providing no Russian settlement stood in the way.

With an eye toward the Stikine fur trade, the British company in 1833 outfitted the brig Dryad to sail from Fort Vancouver on the Columbia River to the Stikine to establish a permanent trading post upriver.

The Russians, however, had thoughts of their own on protecting the Stikine fur trade, and in 1833 Lt. Dionysius Zarembo and a band of men were sent to build a fort near the mouth of the Stikine. A spot was chosen near the north end of Wrangell Island, where the Marine Bar stands today, and the fort was completed in 1834.

The Tlingit village at that time was about 13 miles south, at a site now known as Old Wrangell. The village was moved to the harbor area in the 1860s.

Baron Ferdinand von Wrangel, manager of the Russian American Co. in Sitka at the time, got his confrontation in 1834 when the British brig approached the mouth of the Stikine and was greeted by a volley from the fort and the Russian brig Chichagof, at anchor near the fort.

Zarembo then boarded the British ship, protesting the entry of a British vessel into a river in Russian territory.

It appears no one asked the Stikine Tlingit, who protested against any new party going up the river to trade with the Interior tribes – an ancient trade right they fiercely maintained.

The British protested to the Russian government, and an agreement was reached in 1839 in which the British waived damages from the incident and obtained a 10-year lease of the coastline from the Russians for an annual payment of 2,000 land otter skins.

The British flag was raised over the fort June 1, 1840, renaming it Fort Stikine.

The lease with the British was renewed until the United States purchased Alaska from Russia in 1867, making Wrangell the only city in Alaska to have been ruled under three flags.

But fur, which had attracted Hudson's Bay, was to face competition with the discovery in 1861 of gold on the Stikine. With the arrival of hundreds of gold seekers, Wrangell began the first of its three lives as a gold rush boom town. *(Continued on next page)*





With the onslaught came continuing problems for the Native community, sporadic incidents usually spurred by opportunism and exploitation.

The introduction of steamship service up the Stikine further strained relations. Capt. William Moore took a steamer Flying Dutchman upriver, pushing a barge bringing miners and provisions to the camps. The Stikine Tlingit rioted, claiming the boisterous craft would upset moose and salmon, and finally were paid with Hudson's Bay blankets to restore order.

The 1861 rush was over only a few years after it began, when the gold deposit was found to be of limited extent. With the lowering of the Russian flag in 1867, Fort Stikine and the rest of Alaska became a possession of the United States. A new fort, named Fort Wrangell, after the baron, was built from 1868-70 at the site of today's post office.

In 1872, two prospectors returned from Dease Lake in the Cassiar region of the Canadian Interior after finding gold. They left for the winter, seeking reinforcements and returned in the spring with an entire party of hopefuls, including Capt. Moore. The Cassiar gold rush was on, marking the second boom for Wrangell and bringing thousands of miners and everything thousands of miners needed, or at least wanted. Gambling, women and dance halls flourished.

By 1888, the Cassiar rush had all but died. The second boom was over.

Fishing, canneries and a lumber mill were to provide the town with the economic stability gold and furs could not provide. In the late 1880s, the Wilson & Sylvester sawmill, believed to be the first in Alaska, was founded by Capt. Thomas A. Wilson, Juneau's first Customs inspector, and a retired fur trader, Rufus Sylvester. The mill, which later was to produce high-grade timber for airplane construction, produced packing boxes for the canneries and building lumber.

With the infancy of those industries came the last of the three gold rushes. The Stikine was tapped as a route – although a backdoor pathway – to the Klondike rush of the late 1890s. Miners would travel the Stikine to Telegraph Creek, British Columbia, proceed 160 miles to Teslin Lake and then follow the Hootlalinqua River to the headwaters of the Yukon River.

The Teslin route was more promising than profitable, however, and by



the turn of the century the miners were gone and Wrangell was again a quiet town of about 1,500 persons.

More salmon canneries would open, in addition to shrimp and crab operations. The canneries brought the arrival of great sailing ships and, later, the steamers, making their runs between Seattle and San Francisco and the ports of Southeast, including Wrangell.

Before the arrival of air service, steamships were the town's sole lifeline, and at one time more than 35 ships a week stopped at Wrangell.

Throughout it all, the Stikine continued its role as a major transportation corridor, with riverboat service until that ended about 1970.


The town enjoyed several decades of timber prosperity, with logging camps on the island and around Southeast feeding the sawmills. But economic and environmental restraints later closed down the mills and most of the logging in Southeast, including pulp mills in Ketchikan and Sitka in the 1990s.

Today, the Stikine River continues to serve as a favorite recreation area for Wrangell residents and visitors, keeping with the name: Gateway to the Stikine.

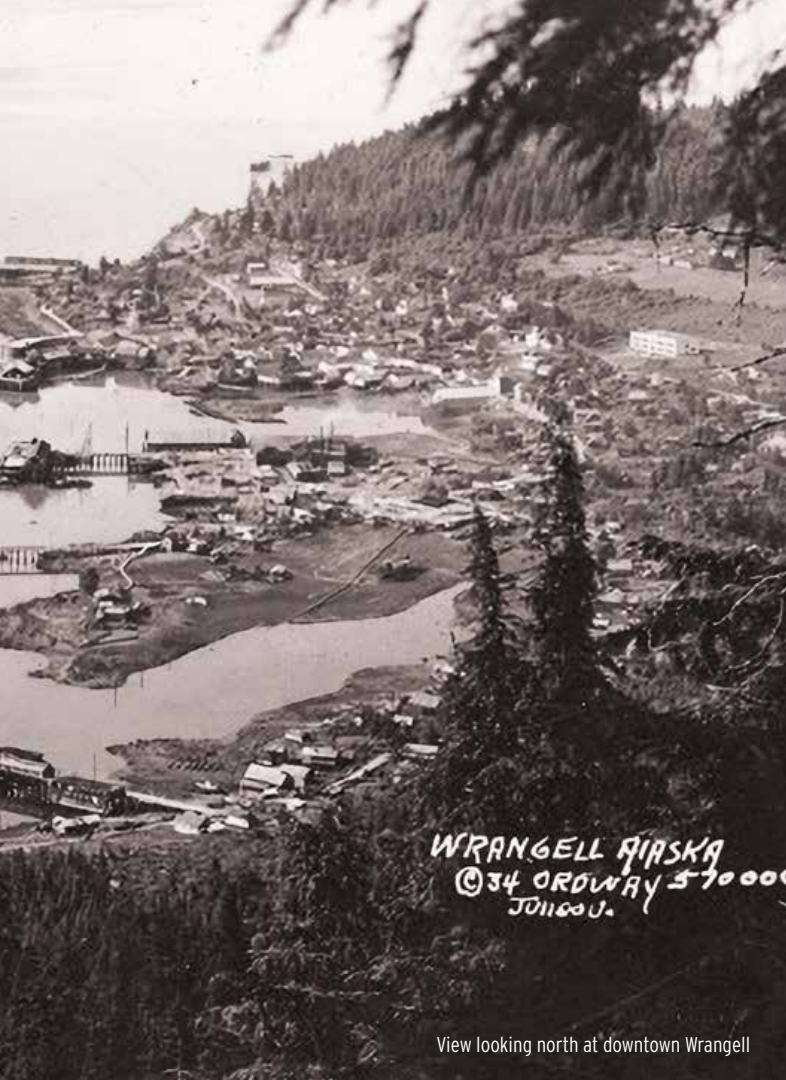
Rayme's Bar

The Horniest Bar in Town!

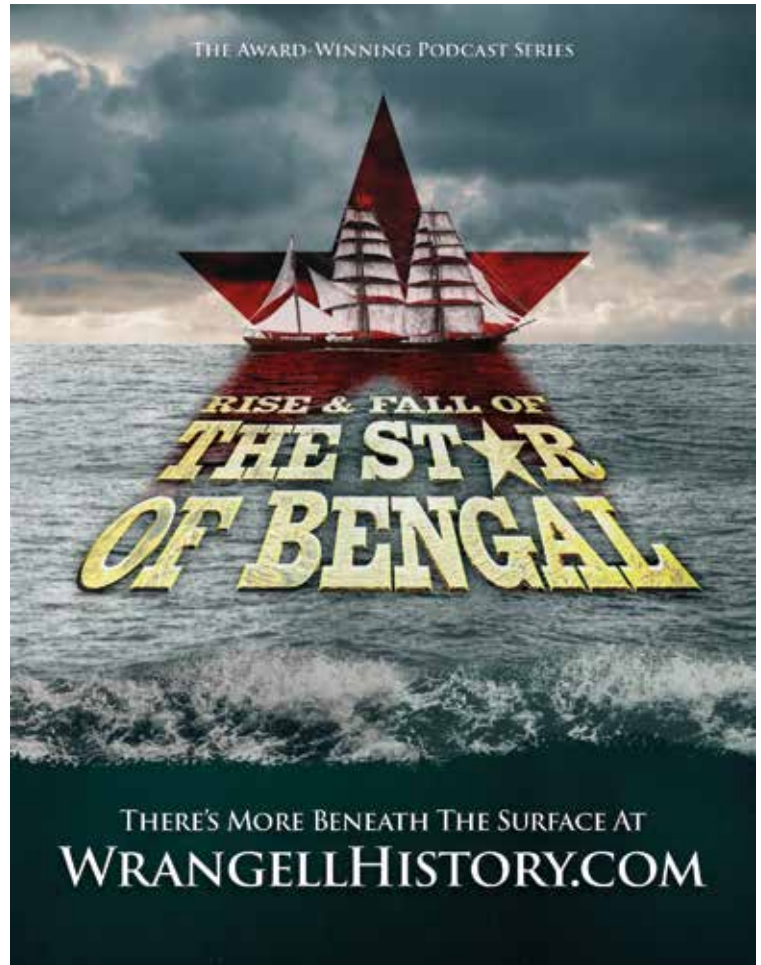
- Darts
- Pool Table
- Draft Beer
- Touch Tunes Music



532 Front Street



View looking north at downtown Wrangell



Hotel billed itself as big-game hunting headquarters

Men lined up at the bar at the Grant Hotel, also known as the Wrangell Hotel, in this photo from 1898. In addition to drinks and whatever games were allowed in the adjacent Club Room, men could get a haircut in the barber chair to the left of the bar. The hotel burned down in the March 1906 fire that leveled downtown – but was quickly rebuilt and reopened in about five months. The hotel, on the water side of the main street, was badly damaged in a 1918 fire and repaired again. By 1924, the hotel was advertised as “head-quarters for tourists and big-game hunters ... located at a pivotal point in the heart of the greatest hunting and fishing region in Alaska.” It burned down in the 1952 blaze that destroyed much of downtown and was not rebuilt.



Washington State Historical Society photo collection, Catalog ID 1969.8.2.7



THE STIKINE RIVER

Start Your River Adventures From Wrangell

The fastest-flowing navigable river in North America, and one of the few remaining free-flowing rivers, the Stikine (pronounced 'Stick-EEN,' meaning "Great River") runs 330 miles through British Columbia, the Coast Mountains and Alaska to its delta, just a few miles north of Wrangell.

A favorite camping, fishing, hunting and boating area for residents and visitors alike, the Stikine offers magnificent scenery with unparalleled views of glaciers, ice fields and mountains.

Many Wrangell residents pilot their boats across the river delta – not an easy feat, since the delta is laced with tricky sandbars – to explore the side sloughs of the river, picnic on sandy beaches or visit other favorite spots.

The river is truly a photographer's dream. The delta is a haven for more than 120 species of migrating birds in the spring and fall, including tundra (whistling) swans, Canadian geese, sandhill cranes, mergansers, waterfowl and shorebirds.

There is other wildlife such as otter, beaver, bear and moose. There is also a large sea lion haul-out site at the mouth of the Stikine River during March and April, when you can hear them making a ruckus all the way from town.

Several Wrangell charter boat and jet boat operators offer trips on the Stikine, including roundtrips to Telegraph Creek, British Columbia. Another option is to take an air charter flight to see the spectacular scenery from above.

In 1980, Congress passed the Alaska National Interest Lands Conservation Act, creating the 449,951-acre Stikine-LeConte Wilderness, surrounding the Alaska portion of the river.

Roaring rapids and unique landscapes are among the many attractions found by following the Stikine River into interior British Columbia. Though the spectacular mountains, canyons, glaciers, forests and wildlife of the area are not as well known as easier-to-access attractions, a river trip is well worth the time and customs clearances to and from Canada.

Those who wish to experience

GOING TO WRANGELL? WE INVITE YOU TO GO FLIGHT-SEEING WITH SUNRISE AVIATION THE STIKINE RIVER & LECONTE GLACIER



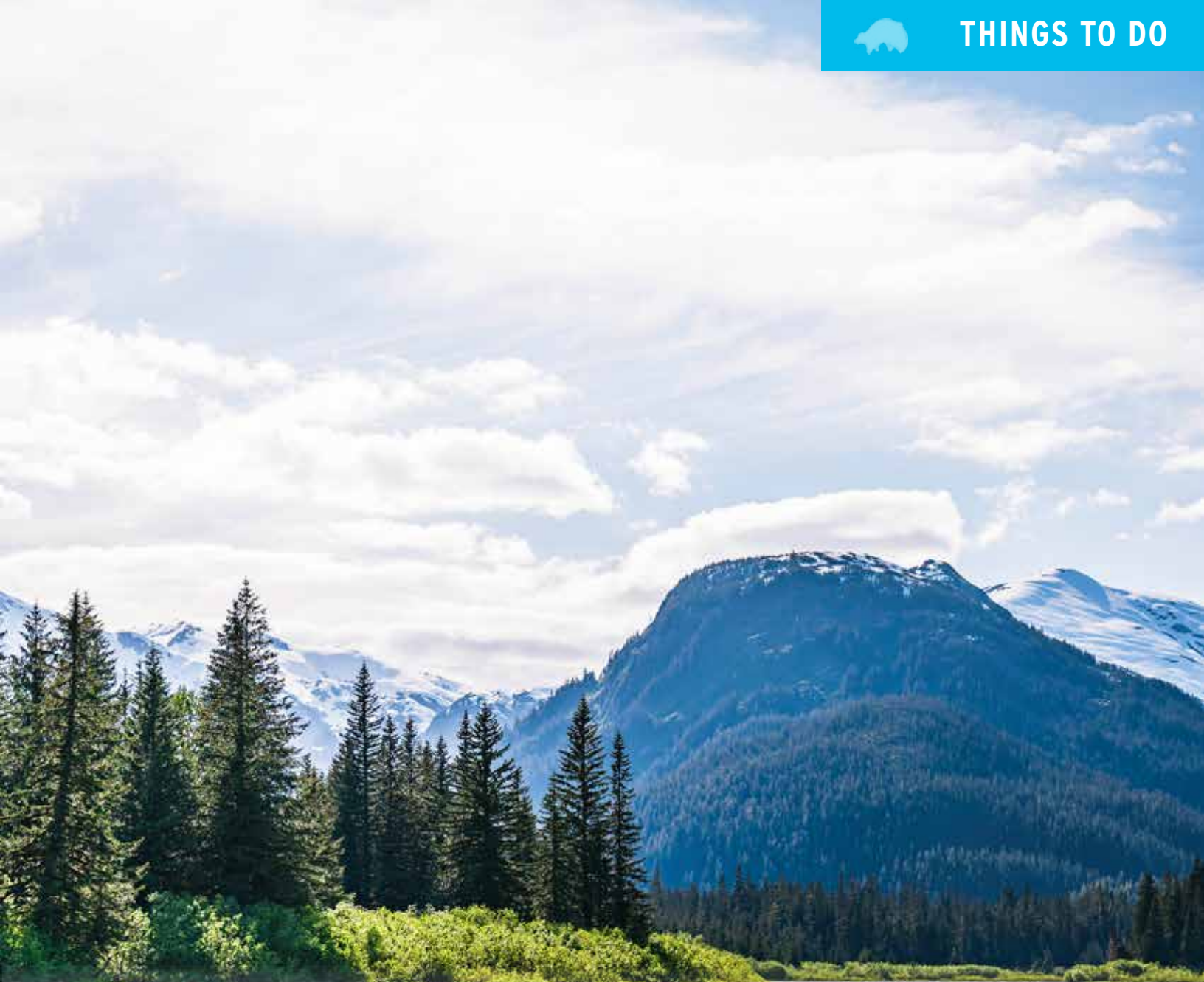
- Charter Service throughout Southeast Alaska
- Transportation to lakes all U. S. Forest Service Cabins
- Business Transportation & Flight-seeing tours

Call us for all your air charter needs Float & wheelplane services throughout the Alaska Panhandle.

Located at Wrangell Airport
P.O. Box 1440, Wrangell, AK 99929
Email: sunriseaviation.ak@gmail.com
Ph: (907) 874-2319



Neal Alfano (@nealalfano)



this beauty should come prepared for a real wilderness adventure. The river begins its journey deep inside British Columbia at peaceful headwaters in the Spatsizi Wilderness Park.

Brown bear, caribou, moose and mountain goat roam the tranquil rolling tableland in this area, surrounded by vast mountains. The alpine tundra along the upper reaches of the Stikine gradually gives way to a thick spruce forest farther downstream. One of the most spectacular features of the river is the 45-mile-long Grand Canyon of the Stikine, about 200 miles upstream from Wrangell. Canyon walls soar as high as 1,000 feet.

Just south of the Grand Canyon is Mount Edziza Provincial Park and Recreation Area, a significant volcanic area in Canada. No eruptions have been officially recorded, apart from in the oral histories of Native clans.

At the west end of the Grand Canyon is Telegraph Creek, population around 400, the only town along the Stikine. Most of the residents are

Tahltan, the Indigenous people who settled the Interior region.

Rafters, kayakers and canoeists use the town as a starting point for exciting, scenic trips downriver to Wrangell.

The high peaks of the Coast Mountains tower up to 10,000 feet over the river. Glaciers hang from high mountain valleys. The river snakes between forested shores and wide expanses of sand and log deposits past connecting river outlets and cascading waterfalls, through untamed country where visitors enjoy camping, fishing, hunting, and exploring.

The Stikine crosses the border into Alaska for the last 30 miles of its run.

More information is available at the Wrangell Chamber of Commerce, from boat and air charter operators in town, or from staff at the visitor desk in the Nolan Center downtown.



STIKINE RIVER PROVIDES MULTIPLE ATTRACTIONS

CHIEF SHAKES HOT SPRINGS

Located about 28 water miles from the Wrangell downtown harbor up the Stikine River, the hot spring is one of the more popular recreational destinations for local residents – and visitors too.

One covered and one open-air redwood tub provide comfortable places for a hot soak. There are dressing rooms, benches and outhouses, but no overnight accommodations. Expect large crowds on weekends, holidays and sunny days throughout the summer.

A high-river level at Ketili Slough is required for easiest water access to the hot springs, though a 0.3-mile trail off Hot Springs Slough provides access at lower water levels.

There is no fee to use the hot tubs, which are maintained by the U.S. Forest Service.

Water is available from a nearby stream, but treat the water before drinking it.

TWIN LAKES

When the water is high enough to allow access from the Stikine River, this is a favorite summer recreation spot for water skiing, jet skiing, picnicking and swimming.

At the entrance to Twin Lakes Slough, the U.S. Forest Service has a public recreation cabin available for rent. The 16-by-16-foot A-frame cabin has a sleeping loft, with a pit toilet nearby. A trail leads from the cabin to the lakes.

Reservations available online at www.recreation.gov.

TELEGRAPH CREEK, BRITISH COLUMBIA

Wrangell also provides an opportunity for an excursion up the Stikine River to Telegraph Creek, 160 miles from Wrangell into the Canadian interior. Telegraph Creek is accessible by either plane or boat. Visitors get a first-hand look at a gold rush town, replete with historic buildings, including the former Hudson's Bay Co. (a Canadian Heritage Building).

The area surrounding the town provides opportunities for walking, hiking, fishing and camping.

Telegraph Creek also offers a road link to Canada. Just 70 miles to the northeast is Dease Lake and the Cassiar Highway, which bridges the Grand Canyon of the Stikine. The 45-mile-long canyon at its deepest points has rock walls towering almost 1,000 feet above the river.







MUSKEG MEADOWS MUCH MORE THAN PAR FOR A GOLF COURSE

The fairways at Muskeg Meadows are long and wide, with spectacular views all around, particularly looking toward the mainland across the Back Channel from the course on the east side of Wrangell Island.

Muskeg Meadows is Southeast Alaska’s first U.S. Golf Association regulation 9-hole course. It opened in 1998 and now also includes an 18-basket disc golf course.

On sunny days, there’s no nicer place for a walk – and few prettier courses. Visible over and between the trees are spectacular water views, with forested and snow-capped mountains beyond.

Keep an eye out for bald eagles overhead and be aware that bears occasionally wander the course.

There is a driving range (covered at the tees to protect golfers from the rain) and a practice putting green available for free use.

Wrangell Golf Club hosts multiple tournaments each summer, drawing contestants from around Southeast Alaska and the rest of the country.

Located on Ishiyama Drive (also known as the Spur Road) on the way to the airport, the course is entirely the work of volunteers, with much of the equipment and materials donated by Alaska Pulp Corp., Ketchikan Pulp Corp. and Silver Bay Logging.

The club has established a “Raven Rule” that stipulates if a raven steals your ball, you may replace it with no penalty, provided you have a witness.

There are golf clubs, pull and power carts and discs available for rent at the course, along with snacks and beverages at the pro shop.

Golfers can pay their by-the-day green fees at the shop or after hours in the orange lock box. Season passes are also available, as are memberships.

Course hours vary, so call to check in for the schedule. Find out more by calling 907-874-GOLF or check out the website at muskegmeadows.com.



Photo: Vincent Balansag

Wrangell





Wrangell's Quality Food Store

GROCERIES

- Full line of groceries
- Quality meats
- Fresh produce
- Wide variety of new products

DELI

- The place to stop for delicious snacks and meals

ATM

&

KODAK PHOTO KIOSK

Open 7 days a week

LIQUOR

- A complete selection of liquor, wine, beer and a variety of tobacco products

NON-FOODS

- Including health and beauty aids
- Housewares
- Seasonal items

Located Downtown on Campbell Drive next to the Museum

907-874-2341

 like us on


wrangelliga.com



STIKINE IS FOR THE BIRDS, AND THE PEOPLE WHO ENJOY THEM

Southeast Alaska is home to hundreds of species of birds and though they may be small and delicate looking, many of them perform awesome feats of stamina to survive.

The common murre, found around Wrangell Island, is one of the avian world's most accomplished divers, easily reaching 100-foot depths in search of fish to eat and capable of diving to almost 600 feet.

Western sandpipers fly thousands of miles to the Wrangell area from their winter homes in Mexico and Peru.

Visitors who aren't in town for the annual Stikine Birding Festival – planned for April 24-28, 2024 – can still appreciate Wrangell's birds. Peak birdwatching season starts around April and tapers out in August.

Early in April, when the eulachon (pronounced "hooligan") spawn – also known as candlefish, for their high-oil content – a wave of eagles descends on the Stikine River delta to feed. Then in early May, the same area is covered with sandhill cranes, snow geese and others.

Exploring the Stikine requires a boat ride out of town, but local guide services offer jet boat tours and kayak rentals.

However, visitors don't need to go as far as the Stikine River flats to see birds – plenty of fascinating species congregate downtown, particularly ravens. The Muskeg Meadows golf course and the nature trail near Evergreen Elementary are also great places to look for birds nearer to central Wrangell.

Local birding enthusiast Bonnie Demerjian recommends that new

birders purchase a pair of binoculars and start learning to identify birds one by one, by their calls and plumage. "It's an intellectual activity," she said. "It's kind of like a puzzle. If you see a bird, try to figure out what it is from appearance or the sound that it makes. Birds are beautiful creatures. It's a really good way to connect people with their environments."

The olive-sided flycatcher, for example, breeds in Alaska but winters in the tropics. A young bar-tailed godwit may have recently made a record-breaking nonstop transpacific flight from Alaska to Tasmania, south of the Australian mainland. "They're world travelers," said Corree Delabue, of the U.S. Forest Service.

Demerjian encourages people to practice ethical birding when observing area wildlife. Using bird sounds to attract birds can interfere with their feeding, and birders should avoid disturbing habitat by staying on trails. They should also avoid walking in residents' yards.



**CANOE LAGOON
OYSTERS**
— WRANGELL, ALASKA —

Oysters, Gifts and Apparel
freshalaskaoysters.com
928-301-7087
106 Lynch Street C-3



Photo: Rick Rivard



ANAN WILDLIFE OBSERVATORY

As the salmon gather up Anan Creek to spawn, so too the bears gather to feast upon the moving mass of tasty fish.

Anan is a world-class bear viewing site, just 30 miles southeast of Wrangell. Travelers can take off from the Seattle airport in the morning and be at Anan in the afternoon.

Home to one of the largest pink salmon runs in Southeast, the creek draws brown and black bears, creating a viewing opportunity that is unique in Southeast. Both species of bear work the salmon stream together, which is atypical of areas

where the two species' habitats overlap.

The Anan bears get along because they are more concerned about the food than each other, Dee Galla, a recreation planner at the U.S. Forest Service Wrangell Ranger District, explained.

"The food source is so rich that the bears will tolerate one another," she said. "It's all about the salmon. They're going to go where they're going to get the most food. To come here, they have to tolerate each other."

The fish bounty also means the Anan bears are unusually tolerant of humans. "It's not because they like people," Galla said. "It's just that they have to be less reactive if they want to eat."

A new, expanded observation platform was built in 2022. The facilities include a covered viewing shelter, decks, photo blind and outhouses.

The U.S. Forest Service limits the visitor count to 60 per day on guided trips during the peak bear season of July 5 to Aug. 25. Most Anan visitors use an authorized guiding company, of which there are several in Wrangell.

The Forest Service staffs the site 8 a.m. to 6 p.m. every day during the permit season.

For individuals who have their own boat or floatplane to reach Anan, there are 12 private permits available for purchase for each day on [recreation.gov](https://www.recreation.gov).

Visitors to the observatory can expect to see bears working the streams, but a nearby hiking trail also provides opportunities to see bears going about their routines.

Several Wrangell-based charter boat services provide guided trips to Anan during the season. Look them up on the chart on Page 47 of this guide. Or check anancalendar.com to see which guides are providing trips on days you'd like to visit.

Although the observatory is open outside of the permit season, the best time for seeing the most bears at the dinner table is between the July and August dates.



Frazer Leal (@frazerlealphotography)



ALASKA CHARTERS

info@alaskaupclose.com

907-874-4157

www.alaskaupclose.com

TOUR OFFICE LOCATED IN SOUTH END OF THE STIKINE INN

SMALL GROUPS
FULL DAY TOURS
EXPERT GUIDES
CERTIFIED
NATURALIST



ADVENTURE TOURS

BEAR VIEWING GLACIER TOURS STIKINE RIVER
WHALE WATCHING PHOTO TOURS SPORT FISHING

34+ YEARS ALASKAN OWNED AND OPERATED

FISHING

EXCELLENT EQUIPMENT
FAST BOATS
ON-BOARD HEAD



SALMON
HALIBUT
FRESHWATER

www.alaskachartersfishing.com



ALASKAN ARTIST

Brenda Schwartz-Yeager

PAINTING COASTAL ALASKA

GALLERY
LOCATED IN
THE SOUTH-END
OF THE
STIKINE INN



brenda@marineartist.com 907-874-3508 www.marineartist.com

Wrangell's Waterfront Hotel



STIKINE INN

www.stikineinn.com • 888-874-3388



Coffee Shop
Restaurant
Lodging

Free
WiFi

Our Menu



HERITAGE FISHERIES

LOCALLY CAUGHT
SUSTAINABLE
ALASKAN SEAFOOD



- HALIBUT
- SALMON
- SHRIMP
- ROCKFISH

WE SHIP OR
LOCALLY AVAILABLE AT
SOUTH END OF STIKINE INN

907-874-4157

or SWEET TIDES or MIDNIGHT OIL

www.movetowrangell.com

WRANGELL REAL ESTATE

FOR SALE

Call Kathleen I can help you buy or sell

907.874.4445

FM 101.7
kstk *Stikine River Radio*
CoastAlaska, Inc.



STIKINE RIVER RADIO WELCOMES YOU TO WRANGELL!

Serving Wrangell and the Stikine River area with local news, information, great music, weather forecasts and high school sports. KSTK is local radio for local people, proudly broadcasting from Tlingit Aani



101.7 FM and streaming online at
www.kstk.org



Let our fleet of vehicles help you get where you need to go with convenience and comfort.

1450 Airport Loop Rd
907.874.3975

islandescaperentalcars@gmail.com
wrgislandescape.com



HIKING, CAMPING & SIGHTSEEING

Wrangell offers many scenic spots for picnicking and camping, from easily reachable City Park and Shoemaker Bay to the more remote Nemo Point and Salamander Creek campsites.

MOUNT DEWEY TRAIL

Located right behind downtown, this large, tree-covered hill is a quick hike for a fine view of Wrangell and Zimovia Strait. A trail leads up the hill from downtown. Go up to Third Street behind the high school, or from Front Street take McKinnon Street heading away from the water to the set of stairs leading up past Reid Street, veer left at the top of the staircase and follow Mt. Dewey Lane until it hits Third Street. A sign pointing right shows the way to the trail.

VOLUNTEER TRAIL

For a short but pleasant walk near town, head for Evergreen Elementary School and the baseball fields behind it. Taking either the route between the two fields or north past the tennis courts, you will find a gravel trail that meanders through the muskeg with interpretative signs pointing out particular flora and fauna, as well as occasional benches to rest on, courtesy of the U.S. Forest Service.



Neal Alfano (@nealalfano)

CITY PARK

Located about a mile south of town on Zimovia Highway, the waterfront park is adjacent to a historic cemetery and an old baseball field now used as the community garden.

The park contains picnic tables, shelters and restrooms. Tent camping is restricted to 24 hours. Camping is not allowed inside shelters. Overnight parking is prohibited.

For those going on their first date, and those celebrating their 31st year.

One relationship that should last forever? The one with a healthcare provider that you trust. So we'll be here for you through all the stages of your life. Right by your side with a health network that only gets stronger the more it grows. Find the care you deserve at searhc.org.

Health. For All. SEARHC





Avid cyclists may want to take advantage of the paved bike trail along the highway – it starts near the Public Safety Building and runs past Shoemaker Bay Park.

SHOEMAKER BAY

Shoemaker Bay RV Park is about five miles south of town, along Zimovia Highway. The park offers 25 sites open exclusively to RV and trailer campers - 15 with electricity, 10 without. All sites have excellent views of Zimovia Strait and neighboring Woronkofski Island. A freshwater pump is located near the entrance to the Shoemaker Harbor parking lot.

Facilities are on a first-come, first-served basis; no reservations taken.

There is a holding tank dumpsite for RVs in the harbor parking lot. There are also restrooms and a dumpster. A tent camping area is located in a wooded spot near a creek. South of the creek is a tennis court, restrooms and picnic shelter. Tent campers should use the designated camping area only.

Inquire at City Hall at 907-874-2381 or Parks and Recreation at 907-874-2444 for rules.

RAINBOW FALLS TRAIL

(moderate to difficult)

Just across Zimovia Highway from the Shoemaker Bay camping area is the Rainbow

(Continued on Page 28)

Conveniently located.
Short and long term stays.
Great Prices.

Contact Bonnie at 907-305-1211.
Located at 1214 and 1203 Peninsula Street.

JOHNSON'S BUILDING SUPPLY

For All Your Building Needs

2.5 Mile Zimovia Highway
907-874-2375 • Facebook: @Johnson's Building Supply, Inc

ATM

224 Brueger St.

Open 24 Hours

FIRST BANK
The one who's here.

Wrangell Branch | 907.874.3363 | FirstBankAK.com

Member FDIC

TRAVEL OUTSIDE THE LINES

WRANGELL





SHAKES LAKE IN THE STIKINE-LECONTE WILDERNESS AREA



(Continued from Page 25)

Falls Trail, which offers a self-guided hike through the pristine Southeast Alaska rainforest. A little less than a mile up the trail is a beautiful view of Rainbow Falls; a tenth of a mile later, the trail ends above the waterfall and provides spectacular views of Chichagof Pass, Zimovia Strait and surrounding islands. Viewing platforms and bench seating make this a great place for a picnic. The trail intersects with Institute Creek Trail.

INSTITUTE CREEK TRAIL *(difficult to most difficult)*

If you choose to continue from the Rainbow Falls Trail, this trek offers many scenic views for an additional 2.7 miles (and a total 1,500-foot elevation gain) on the way to the Shoemaker Bay Overlook Shelter.

SHOEMAKER BAY OVERLOOK SHELTER

There's a three-sided shelter, picnic table, fire grill and outhouse, as well as an excellent view of Shoemaker Bay Harbor, Zimovia Strait and surrounding islands.

NORTH WRANGELL TRAIL DIFFICULT *(most difficult)*

This trail begins 2.2 miles from the Rainbow Falls Trailhead via the Rainbow Falls and Institute Creek trails. The trail leads 1.3 miles to the High Country Shelter and continues another mile to the Pond Shelter. Shelters are three-sided with a picnic table and an outhouse.

Hikers can also start on the opposite side of the island and travel over the mountain toward Shoemaker. This hike starts at the North Wrangell trail and ends at the Rainbow Falls trail. The trail, which is surfaced with boardwalk, begins about 3.6 miles down Ishiyama Drive, which locals often refer to as Spur Road.

PATS LAKE

Pats Lake recreation area is 11 miles south of downtown Wrangell, at a crossroads where dirt roads branch off Zimovia Highway. The first road to the left goes by Pats Lake, while the second turnoff leads to Pats Creek. There's pleasant hiking along an easy mile-long trail from Pats Lake, which follows Pats Creek as it empties into the sea. Several varieties of trout are found in the lake and creek. The creek also has a fall salmon run.

The turnoff to the right leads down to the water. A short walk north – and back across Zimovia Highway – leads to the mouth of Pats Creek to a sandy point, which is good for picnicking or a little seaside relaxation as well as an occasional haunt of local saltwater fly fishermen.

**Island of Faith
Lutheran Church**



Worship: Sunday at 9:30 a.m.



211 Second Street

907-874-2743

Facebook: islandoffaithlutheran

TK's Mini-Mart

- Snacks • Food • Drinks
- Hot Deli Food • Chilled Beverages
- And Hot Coffee

**TO GET YOU
GOING!**



930 Zimovia Highway • 907-874-2361



CHARTER OPERATORS PROVIDE HELP FOR A SUCCESSFUL FISHING TRIP

Salmon and halibut are the area's top draws for sportfishing. The town has several charter boat operators eager to help with all your arrangements, while sharing their expert knowledge toward a successful fishing trip.

They also can offer assistance in packing and shipping your seafood to arrive safely back home. Be sure to use an airline-approved fish box or sturdy tote to check in your catch.

A state license is required for sportfishing. In addition, sport anglers need a king salmon stamp to go after the largest of the salmon in Southeast.

Locally, all the licenses and stamps are available from Angerman's, Buness Bros. and Sentry Hardware, all located on Front Street downtown. And all carry sportfishing gear, along with friendly advice.

The state licenses also are available online at <https://store.adfg.alaska.gov/>.

Non-residents under the age of 16 do not need a sportfishing license or king salmon stamp.

The rules for daily catch and seasonal limits are important to maintain the health of salmon stocks. Charter fishing operators and license vendors are a good source of information.

Anglers also can call the state's 24-hour automated information line to check on fishing results and any changes in the rules. The recorded line operates April 15 to Sept. 15, at 907-465-4116.

Salmon runs start in early May and extend into fall. Steelhead and Dolly Varden fishing is open year-round, although the best steelhead fishing is in April and May. The best season for Dollies starts in June and continues through September.

Halibut can be caught year-round, though they can more easily be found during the summer months.

For freshwater fishing enthusiasts, some of the best spots are a short drive away. They include Thoms Lake, Pats Lake, Pats Creek, Salamander Creek and Institute Creek. Institute Creek and Pats Creek are accessible off Zimovia Highway. Highbrush Lake, Thoms Lake and Pats Lake are all accessible via U.S. Forest Service roads.





BREAKAWAY LLC
ADVENTURES

BUS STYLE SEATING FOR BETTER COMFORT & VIEW!

WRANGELL'S PREMIER JET BOAT OPERATION
Operating Since 1989

- **THE STIKINE RIVER**
- **ANAN WILDLIFE OBSERVATORY**
- **SHAKES & LECONTE GLACIERS**
- **WATER TAXI SERVICES**
- **CANOE/E BIKES/ SKIFF RENTALS**




TOLL FREE: 1-888-385-2488 • LOCAL PHONE: 907-874-2488

www.BreakawayAdventures.com





PUBLIC CABINS OFFER OFF-THE-GRID GETAWAYS

The U.S. Forest Service has close to 150 public-use cabins throughout the Tongass National Forest in Southeast Alaska, with more than 20 in the Wrangell Ranger District.

Most of the cabins are in remote areas and are primarily used for hunting, fishing and recreation. They come with sleeping bunks, tables and benches.

Inland cabins are usually accessible only by air, while those on saltwater beaches can be reached by boat or floatplane, depending on the tides.

The Forest Service also has several campsites in the area, mostly on former logging roads and with an outhouse on site.

Reservations are not required for the campsites, but they are for the public-use cabins. The cabins can be booked six months in advance.

Cabin fees are charged per night, regardless of the number of occupants. The fee must be paid in advance at the time of the reservation. There's a cap on the number of consecutive days you can rent a cabin.

Cabin rentals are available at recreation.gov.

One of the area's most popular cabins is Middle Ridge, pretty much in the middle of Wrangell Island. But a landslide in November 2023 has cut off access to the cabin.

Another popular cabin at Anan Bay, near the world-famous Anan Wildlife Observatory bear viewing site, was damaged by a fallen tree in a 2023 wind storm, though work is underway to rebuild the structure – and it could be open later this year.

More information can be found at the Forest Service website or by calling the office on Bennett Street at 907-874-2323 or by visiting recreation.gov.



Homeport Electronics, Inc

Marine - Computer • Sales and Service



TIMEZERO



FURUNO



GARMIN

Computer Repair, Marine Electronics
907-772-3100 • www.homeportelectronics.com
114 Harbor Way, Petersburg, AK

WRANGELL'S TOTEM POLES TELL STORIES OF RICH AND IMPORTANT NATIVE CULTURE

The intricately carved totem poles around Wrangell are a reminder that the town is built on the land of the Shtax'heen Kwaan, or Stikine Tlingit - the Alaska Native people of this area.

Most of the totems you'll find around Wrangell are duplicates of poles that were commissioned in the 1800s, when totem carving first flourished.

To view these artworks, visit Totem Park just off Front Street, the Nolan Center or the Chief Shakes tribal house on Shakes Island, which is accessible from a bridge near the harbor office.

When totem carving started about 200 years ago, poles were put up for a wide variety of reasons - to signal social status, to mark a special occasion such as a potlatch, to record a story or to hold the ashes of deceased relatives. Poles might even be erected to shame people, usually community members of high standing who had failed to meet their obligations.

But this isn't just a tradition of the past - totems are still being carved today by master carvers who continue to innovate on the form.

Not all North American Indigenous groups carve totems. These works are specific to the Alaska Natives and First Nations people of the



Pacific Northwest. Poles reflect the unique identity, history and values of the groups that commission them. The carvings may tell stories or display signs of family lineage.

For example, the Bear up a Mountain pole that used to stand outside the tribal house tells the story of a brown bear that saved the Naanyaa aayí clan from a flood by leading them to higher ground. A bear rests on top of the pole and footprints lead up its side.

In the 19th and late 18th centuries, when many of the original poles were created, it wasn't common practice to repair, repaint or

reconstruct existing totems damaged by rain and rot. It was usually easier - and more socially advantageous - to erect a new pole. Tlingit society was intricately organized by rank, so the ability to commission multiple expensive poles over a lifetime could bump someone up the social ladder.

This all changed during the Great Depression of the 1930s, when a large-scale federal restoration project began. Hoping to create jobs and preserve artistic heritage, the Civilian Conservation Corps hired more than 200 Tlingit and Haida men to restore or replicate totems.

The project, which was led by the U.S. Forest Service, has received both criticism and praise from historians and community members alike. Instead of only hiring young men like it usually did, the Conservation Corps



BEARS WHALES OTTERS GLACIERS & MORE



included elders in the project, allowing knowledge about totem carving to be passed down to the rising generation. Three Southeast clan houses, in Wrangell, Kasaan and Totem Bight near Ketchikan, and 121 totems were restored under this massive preservation effort.

However, the Forest Service often removed totems from their original locations and concentrated them in centralized "totem parks" to attract tourists to the state.

Regardless, this collaboration between Alaska Native carvers and the federal government produced many noteworthy works of art that can be found around Wrangell today.

When looking at Wrangell totems, keep an eye out for recurring motifs like ravens, eagles, frogs, killer whales, beavers, bears, the Gunaakadét (sea monster) and heroes from Tlingit oral histories. Look closely; some figures might even have smaller figures embedded inside them.

The designs on totem poles are closely related to Tlingit social life. The community is divided into two "moieties," or complementary descent groups – raven and eagle.

Traditionally, ravens would only marry eagles and vice versa, but this system has relaxed in the last century. Moieties are divided into clans, clans are divided into houses, and each group has unique crests that might appear on their regalia or totem poles.

Moiety, clan and house crests, along with certain stories and dances, belong exclusively to members of that family group. The fact that not all totem's stories are publicly documented does not necessarily represent a lapse in the historical record. Instead, it may be a conscious effort to keep certain stories private.



Marc Lutz (@marc.lutz.photography)



Wrangell Chamber of Commerce

Your source of information for:

- Local Events/4th of July
- Business Directory
- Restaurant Menus
- Employment Information
- Apartments/Rentals

107 Stikine Ave
907.874.3901



Visit our office
located at the Stikine Inn



Tiny's Taxi

Your local taxi service

907-305-0789

PETROGLYPH BEACH

A ROCK PUZZLE FROM THE PAST

No visit to Wrangell is complete without seeing the ancient stone carvings at Petroglyph Beach State Historic Site, a short walk from downtown and one of the community's most popular visitor attractions.

Former U.S. Forest Service archaeologist Larry Roberts believes the petroglyphs were probably carved by early Stikine Tlingit, possibly 1,000 years ago. However, archaeological finds elsewhere in Southeast Alaska show that humans have been present here for more than 8,000 years – so the rock carvings could be far older.

Wrangell's Petroglyph Beach has the highest concentration of petroglyphs in Southeast and is easily accessible for exploration.

The beach is about a 20-minute walk from the state ferry terminal. Facing the terminal, turn right on Evergreen Avenue, walk north about a mile, then look for a sign and a small parking area. A gravel road to the left of the parking area leads down to the beach.

There is an accessible boardwalk to a deck overlooking the beach, the Stikine River and Zimovia Strait. Replicas of several designs are displayed on the deck for visitors to make rubbings on – but only from the replicas. Rubbings made on the original beach rocks are not allowed, as years of erosion and abrasion have taken their toll. Visitors

are asked to help preserve the original carvings for future generations.

There are steps leading down to the beach for closer inspection of the ancient designs. They are best viewed at low tide.

Most of the iconic symbols are to the right, toward a tidal outcropping as you step onto the sand. Visitors enjoy searching for the more than 40 petroglyphs on the beach. The whale petroglyph, unique to Wrangell, is located along the grass line in front of a house – don't hesitate to go look for it. But please, document your experience with photographs only.

Another option is to stay in town – three original petroglyphs are on display at the Irene Ingle Public Library in town, and a replica is on display at the museum in the Nolan Center.

No one knows the true intent or motivation of the artists, nor what the designs meant to their makers and users. Based on archaeological records and cultural stories, petroglyphs may be a form of writing, a method of communication or a way to record events.





Killer Whale Petroglyph on the viewing platform at Petroglyph beach.
Photo: @nealalfano

There are a variety of interpretations. The designs could have been carved to commemorate victories in war, document the transfer of wealth or territory in settlement of a feud, record important potlatches, or perform a religious function. They could also be simply the work of visiting Tsimshian or of the Tlingit themselves.

The carvings are treasured landmarks and are protected from loss, desecration and destruction under the Alaska Historic Preservation Act.



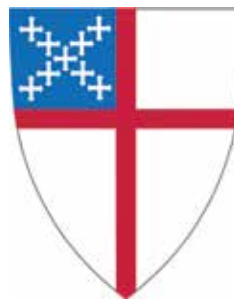
Breakaway Ferry and Freight, LLC



Year-round transportation

Freight and passenger services

907-470-3360
INFO@BFFWRANGELLAK.COM



St. Philip's Episcopal Church

446 Church Street

Sunday Worship,
10 a.m.

All are welcome.

RESIDENTIAL • COMMERCIAL • RENTALS


Anchor PROPERTIES



e: marilyn@apalaska.com | p: 907.470.0085
w: www.apalaska.com | free market analysis

WRANGELL'S #1 REAL ESTATE COMPANY



 JAMES & ELSIE NOLAN CENTER

THE JAMES & ELSIE NOLAN CENTER

The James and Elsie Nolan Center has been a community gathering place since its opening in 2004, preserving Wrangell's diverse culture and history and providing a multipurpose facility for events.

Housed within the Nolan Center are the Wrangell Museum, art gallery, civic center, visitor center, gift shop and theater. The building also has a great view along the downtown waterfront.

The main hall can transform into a theater for movies and events, including banquet seating,

The museum provides an interactive walk through Wrangell's rich history. The exhibits provide a narrative of the culture, heritage and peoples of Wrangell, from the time of the Tlingits through the fur trade of the Russian American Co., British Hudson Bay Co., Wrangell's role in gold rushes, and Alaska's incorporation into a U.S. territory and transition to statehood.

Entering the facility, it's hard to miss the ornate Chief Shakes house posts. They were created between 1775 and 1790 and are accredited to the famous master carver Kadjisdu.a'xch II. They are thought to be the oldest still in existence today. Further into the lobby are the two totems overlooking a replica of the Stikine River Delta inlaid on the floor.

The museum gallery is a stimulating passage through time, beginning

with a view of natural history, then a reverent walk through the land of the Native people who thrived in the area for many years.

There is a replica of the stone carvings located at Petroglyph Beach, thought to be thousands of years old. Around the corner, enter the Russian period and the fur trade (filled with furs to touch and feel). Next, visit the era when Wrangell was a major trade center for three gold rushes. Wrangell was even well known by a few famous faces

THE SALVATION ARMY

TALK TO US
 (907) 874-3753
chase.tomberlin-green@usw.salvationarmy.org
isabella.green@usw.salvationarmy.org

ADULT PROGRAMS & SERVICES

- Sunday Family Worship
- Open Food Bank
- Bible Coloring Study
- Sunday School (Adult & Youth) 10:00am
- Family Worship - 11:00am
- Tuesdays 10:00am - 2:00pm
- Wednesdays @ 5:00pm

YOUTH PROGRAMS & SERVICES

- Pre-K Art Mornings (0-5)
- Teen Game Night (12-18)
- Thursdays @ 10:00am
- Thursdays @ 6:00pm



HARBOR VIEW Self Storage

- Large 45' and 15' units with 14' high clearance
- Large 30' x 15' units with 12' high clearance

907-796-9007
www.harborviewstorage.net

including Wyatt Earp, who served as temporary town marshal, and John Muir, who wrote about his many adventures.

Finally, your journey winds into the 20th century. This area is packed full of Wrangell's more recent history, exhibiting stories of the people and their businesses.

The visitor center houses an interactive map of the island and Stikine River Delta, one of the most popular features in the Nolan Center. Visitors can find printed maps, brochures and photos. Representatives from the U.S. Forest Service are available to answer questions and share information on days when a cruise ship is in town.

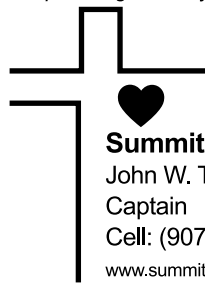
More information is available from the Nolan Center at 907-874-3770.



The "High Point" of Your Alaskan Adventure

- Water Taxi
- Telegraph Creek. BC
- Freight Hauling
- Inland Waters
- Stikine River
- LeConte Glacier
- Onboard Bathroom

Ranked #1 in passenger safety and comfort



Summit Charters
John W. Taylor,
Captain
Cell: (907) 305-0416
www.summitcharters.com

• Bakery • Deli • Catering • Cafe • Specialty Coffees

Breakfast • Lunch • Bakery

Catering • Cafe • Bakery

Coffees • Breakfast • Lunch • Bakery • Deli

310 Front Street, Wrangell • 907-874-3900
Facebook: sweettideswrangell
Instagram: sweet.tides.bakery
For catering or special requests, email wrgsweettides@gmail.com

GARNETS HELD IN TRUST FOR WRANGELL CHILDREN

Among the heirlooms of Wrangell's long history, one shines particularly brightly.

The Garnet Ledge – a bedrock outcropping flecked with garnet crystals – is located on the mainland near the mouth of the Stikine River, about seven miles and a quick boat ride from Wrangell.

The garnets are available for purchase at local gift shops and from children and their family businesses. The garnets can also be dug directly out of the ledge, but there's a catch – only children of Wrangell are allowed to do the digging.

In 1962, area businessman Fred Hanford gave the Garnet Ledge to the Boy Scouts of America and the Presbyterian Church “for only so long as the said grantee ... shall use the land for Scouting purposes and shall permit the children of Wrangell to take garnets therefrom in reasonable quantities.”

Hanford's gift was the birth of a multigenerational youth trade, which continues today in retail and wholesale forms, though not on an industrial scale. Kim Covalt, the facilities manager for the church, is tasked with overseeing access.

In 2006, the Scouts transferred their portion of the deed, putting the property under the full ownership of the Presbyterian Church of Wrangell, which holds title today.

Because of the conditions of Hanford's gift, the church insists that any adults wishing to dig garnets out of the shelf of rock must be accompanied by a child of Wrangell. The church interprets the conditions to allow for children even very recently “of Wrangell” to collect garnets.

Garnets are semi-precious gemstones forged in the heat of metamorphic rock. The Wrangell garnet is of the type known as the almandine or carbuncle. They are comprised of iron, aluminum and silica.

Awareness of the stones dates back to the early gold miners of the 1860s. In 1892, J.D. Dana published his “Analysis of Garnet from Wrangell,” the earliest known scientific record of the crystals.



Wrangell garnets can vary in size and are generally ruby red. They are not gemstone quality, however, and cannot be cut or polished without difficulty. A nearby U.S. Forest Service cabin is available for those wishing for some extra time to mine, though permission is still required from the church in order to access the property.

No power tools are permitted. Kids and their families take hand tools and buckets to look for garnets in the rocks and streams.

The cabin is on federal land, but the ledge and its deep scarlet prizes are on private property.

“We don't want to be garnet cops,” the Presbyterian Church says. “We want to be garnet shepherds.” No industrial or commercial harvests by adults are allowed.

Children are allowed to sell the stones of their labor to visitors and wholesale them to gift shops, giving them an up-close learning experience with business and commerce.

“The church holds this in trust on behalf of the children of Wrangell in perpetuity,” the church explains. “If people act responsibly, this 39 acres, unique to Wrangell, is going to exist long after we're dead and gone, and long after our grandchildren are dead and gone.”

Requests to mine garnets or questions can be directed to Covalt at 907-305-0505.

Tourists can find Wrangell garnets from entrepreneurs down by the ferry terminal or City Dock when ships are in port, at the Wrangell Museum gift shop, and sometimes at other shops.



Ritchie's Rocks

*Quality handmade jewelry
with sterling silver and locally
mined Garnet Ledge garnets.
Locally harvested
Devils club products.*

Ritchiesrocks.com • 907-305-1211 • Wrangell, AK



Photo: RE Johnson

GARNET LEDGE HISTORY GOES BACK TO 19TH CENTURY

By Patricia Neal

Wrangell's Garnet Ledge is noted for two things: Its garnets are sold by Wrangell children to visitors, and the ledge was mined by the first all-woman corporation in an era when women were just beginning to be accepted into the business world.

The Garnet Ledge has a long history that goes way beyond entrepreneurship by women and children. While mining for gold on the Stikine River was active in the 1800s, there were at least 28 claims to the area (the majority by Alaska Garnet Mining & Manufacturing Co.) and at least two leases to the site beginning in 1881. Most claims were short-lived. It was hard work mining garnets and then you had to figure out what to do with them!

Between the late 1800s and 1905, activity at the ledge was mainly day trips to dig for garnets and to have a picnic by the locals. But, in 1905 there were three separate claims filed on the area.

A group of businessmen from the Chicago area visited Wrangell in 1905. They were looking for investment property, and the Garnet Ledge looked like the perfect opportunity. The Alaskan Ruby Mining & Development Co. was formed. The company leased the property from Alex Vreatt and William Taylor. Shares in the corporation were offered at \$4 each. An "Alaskan Ruby" was added to sweeten the deal. About

two tons of garnets were shipped out, but the company was never heard from again.

The most active and most profitable claim to the ledge was owned by the Alaska Garnet Mining & Manufacturing Co., of Minneapolis. The company was formed in late 1906, with Anna E. Durkee the controlling stockholder, secretary and general manager. She heard about the property while in Wrangell earlier that year while visiting with her friend Mary Elmer. They were scoping out a copper mine located not too far from Wrangell.

Durkee purchased the property from Vreatt and Taylor. She returned to Minneapolis with plenty of garnets to show to her friends. Armed with tales of Alaska and the deep burgundy-colored garnets, she convinced 15 of her women friends to invest in the company.

News of the corporation made the front page of the Alaska Sentinel in Wrangell, but only an inside page of the Minneapolis Journal. Durkee indicated to reporters that men would be hired to work the mine but would not be involved in the corporation.

The women participated in the 1909 Alaska-Yukon-Pacific Exposition held in Seattle, and they were at the 1915 for the Pan Pacific Exposition in San Francisco. Several tons of garnets were shipped from the mine to Wrangell and then down to Seattle and on to San Francisco.

Mention was made in the newspapers across the country that the women were manufacturing jewelry and that sales were going well in England because the gems were from Alaska. To date, none of the jewelry that the women manufactured has been identified.

After the 1920s, work at the mine ceased and the buildings at the mine and the equipment fell into disrepair. By that time Durkee had moved on to mine in Arizona.

Wrangell businessman Fred G. Hanford acquired the ledge in 1962. He deeded the property to the Southeast Council of Boy Scouts. It allowed the council to retain ownership of the ledge as long as the children of Wrangell were allowed to dig for garnets and the ledge remained open. The ledge was transferred to the First Presbyterian Church of Wrangell church in 2006 when the Scouts could no longer manage the site.

Patricia Neal is the author of "Wrangell Garnet Ledge History" available at local retailers or contact her directly at TrishaNeal@hotmail.com.



907-209-2190

fishwrangell.com

*We offer Ocean &
Stream Fishing.
Group Sizes 2-6.*



***Your Alaska Experience
is Waiting for You!***



BEARFEST EDUCATES, ENTERTAINS & ENLIGHTENS ATTENDEES EVERY JULY

Bear with Wrangell if you're in town July 24-28 this year.

It's BearFest week.

Residents and visitors alike can attend symposiums, listen to live music, test their baking skills, play games and even run a marathon.

BearFest is in its 15th year and is meant to promote the environment, specifically bears, and how important the animals are to the ecosystem.

"We want to showcase our environment, our culture, our resources," said Sylvia Ettefagh, chairperson for BearFest in a 2022 interview.

Each BearFest event is free, except for the dinner and auction typically held Friday night at the Stikine Inn Restaurant. A gourmet dinner is prepared by a renowned chef, while participants can bid on a bevy of items. Live music is performed throughout the dinner.

It's one of the most popular events held in Wrangell every year, and tickets to the dinner sell fast, so check www.alaskabearfest.org to find out when they go on sale.

There are also plenty of events for kids, like book readings and children's games.

Those who like to challenge themselves can play in the golf tournament at Muskeg Meadows or enter a 5K walk or run, half marathon or full marathon.

If you're a foodie and you aren't able to attend the dinner and auction, there's still a chance to taste the local cuisine, like the "Beary" pie contest made with local ingredients and judged by discerning local tastebuds, and the smoked salmon contest offered in past years.

A cooking demonstration is usually held as well, all of which usually takes place at the Nolan Center.

Live music and a music workshop are part of the fun, and there are also bear-related informative talks.

To find out more about BearFest, visit the website alaskabearfest.org or email fun@alaskabearfest.org.

"It's a celebration of bears," Ettefagh said. "That's the short of it."



Frazer Leal (@frazerlealphotography)



**Fishing
Sightseeing
Many more
options.**



**Tight Line River Tours is your leading option
to experience Southeast Alaska's
waterways.**

907-388-8137 • tightlinerivertours@gmail.com



ENJOY
Alaska

ALASKA MARINE HIGHWAY

With the state ferry, the fun doesn't stop at the end of the road. We can connect you to dozens of special places you don't want to miss.

FerryAlaska.com | 1-800-642-0066

[f](#) [v](#) [i](#) #alaskamarinehighway

ANNUAL EVENTS

The Town's Biggest Events



Wrangell enjoys its holidays, especially the Fourth of July. It's several days of food, street games, old-time logging competition, paddle and motorboat races, fishing contests for children, golf, a traditional parade, fireworks – and a lot more food.

Most of the events are held downtown, making it easy for people to wander between the games and activities.

The community pays for its celebration with proceeds from a monthlong fundraising effort, in which Wrangell teens sell raffle tickets for a July 4 drawing. You can buy the tickets straight up, or get them with your lunch sold at downtown food booths throughout June.

The community also turns out in large numbers for a Christmas tree lighting, school concerts and holiday displays and, yes, more food.

Though not an official holiday, the annual salmon derby is a highlight of Wrangell's calendar. Prizes are awarded for the first salmon, the largest salmon caught and other categories in the derby, usually held over several days in May and/or early June.

The chamber of commerce runs the derby, the exact dates and limits set in consultation with the Alaska Department of Fish and Game. The details are available at wrangellfishderby.com

MUSKEG MEADOWS GOLF & DISC GOLF

9 HOLE GOLF COURSE
250 YD DRIVING RANGE
18 BASKET DISC GOLF COURSE
WILDLIFE . UNPARALLELED VIEWS
PRO SHOP . CLUB & CART RENTALS
SNACKS & BEVERAGES
MUSKEGMEADOWS.COM 907.874.GOLF
WRANGELL GOLF CLUB INC . 501C3 NONPROFIT



Midnight Oil

124 FRONT STREET

WRANGELL MADE CLOTHING - LOCALLY CRAFTED GIFTS - FRESH FROZEN SEAFOOD

JEWELRY - CANDY - WRANGELL GROWN FLOWERS - ALASKAN TREATS


www.akmidnightoil.com



ACE IS THE HELPFUL PLACE

104 FRONT STREET PO BOX 81
(907) 874-3377

AS THE HELPFUL HARDWARE FOLKS IN YOUR
COMMUNITY, WE PROMISE THAT HELPING YOU IS THE
MOST IMPORTANT THING WE HAVE TO DO TODAY!

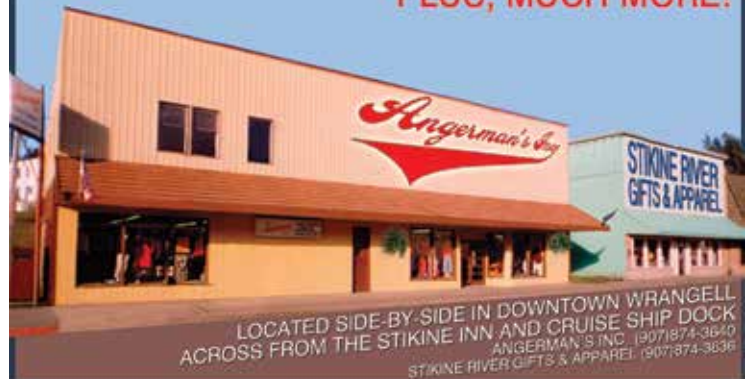
 [ottesensacehardware](https://www.instagram.com/ottesensacehardware)

 [ottesensacehardware](https://www.facebook.com/ottesensacehardware)

ANGERMAN'S INC. & STIKINE RIVER GIFTS & APPAREL

 LIKE US ON
FACEBOOK
[FACEBOOK.COM/ANGERMANS](https://www.facebook.com/ANGERMANS)

NAME BRAND FAMILY CLOTHING
FOOTWEAR, OUTERWEAR & WORKWEAR
FISHING RODS, REELS, TACKLE & BAIT
HUNTING GEAR & CAMPING EQUIPMENT
STATE HUNTING/FISHING LICENSES
ALASKA TEES, HOODIES & CAPS
JEWELRY, GIFTS & SOUVENIRS
PLUS, MUCH MORE!



LOCATED SIDE-BY-SIDE IN DOWNTOWN WRANGELL
ACROSS FROM THE STIKINE INN AND CRUISE SHIP DOCK
ANGERMAN'S INC. (907)874-3640
STIKINE RIVER GIFTS & APPAREL (907)874-3636



WRANGELL MARINE SERVICE CENTER

WRANGELL HARBORS READY TO ACCOMMODATE ALL MARINERS

From 18-foot skiffs to 100-foot yachts to large cruise ships, Wrangell’s port and harbors can accommodate boats of all sizes, welcoming travelers from across the country and overseas – and certainly from our Southeast Alaska neighborhood.

Cruise ships tie up at City Dock, a deepwater dock at the north end of town near the Stikine Inn. Wrangell’s cruise tourism industry has grown steadily since 2014, with the exception of the pandemic seasons of 2020 and 2021. The community this summer could receive as many as 25,000 guests aboard cruise ships and tour boats large and small.

Wrangell also has three borough-operated harbors with reserved and transient moorage options, two Travelifts for haul-out and a Marine Service Center where skilled services are available for boat repairs and most anything else a mariner could need.

Heritage Harbor – a popular spot for visiting vessels – is located about a mile from the downtown shops, restaurants and grocery and hardware stores. Heritage is the newest of Wrangell’s harbors, with electricity and potable water on the docks, a well-maintained restroom, an all-tides boat launch and plenty of turning space to accommodate large vessels.

The harbor is also the site of the Wrangell Mariners’ Memorial, an open-

air gazebo and metal sculptures honoring lives lost at sea.

Located downtown near Shakes Island, the Inner Harbor primarily serves smaller, local vessels, under 40 feet. Like Heritage Harbor, the Reliance Float at Inner Harbor also offers transient moorage for visiting vessels.

Though it is five miles from town, Shoemaker Harbor is surrounded by amenities and recreational opportunities. A park, picnic shelter, restroom, playground and RV camping area are nearby. The harbor offers power, water, waste oil collection and garbage collection.

Before arriving in town, Harbormaster Steve Miller recommends calling the department in advance to touch base with staff and ensure that there is space available.

The summer season – especially around the Fourth of July – is particularly busy. Even then, “we do a pretty good job of making sure that we can accommodate everyone,” Miller said.

For more information, visit wrangell.com or call the Harbor Department at 907-874-3736. The Harbormaster also monitors VHF Channel 16.

56° NORTH
#5 FRONT STREET, NAPA BUILDING



ALASKAN GIFTS, CAMP GEAR,
AND FLY FISHING SUPPLIES
PROVEN TO PERFORM IN
SOUTHEAST ALASKA

- HANDCRAFTED JEWELRY
- ALASKAN GOODS
- UNIQUE GIFTS

HOME TO THE
TOUR DESK OF




**WRANGELL
EXTENDED STAY
and Gift Shop**



Your hosts:
Mike & Lydia
Matney



Our Lodge over looks the ocean. Our hospitality & amenities make your stay as enjoyable and relaxing as possible. Beautiful sunsets to view. Easy access to shopping or just exploring small town living in beautiful Wrangell, Alaska!



All Rooms:

- Queen beds
- Kitchenettes
- WiFi, Cable TV
- Common Laundry

*Spacious rooms,
private bath, private entry!*

RESERVATIONS: 907-305-1117 or 907-305-0989
WEBSITE: www.wrangellextendedstay.com
E-MAIL: info@wrangellextendedstay.com
312 Stikine Avenue, Wrangell, AK 99929

**ARCTIC
CHIROPRACTIC**
Dr. Omid Rahmanian

Treating patients with:

- Headache & Neck Pain
- Muscle & Joint Pain
- Back Pain & Sciatica
- Shoulder & Knee Pain
- Sprains & Strains
- Sports Injuries
- Pinched Nerves



*Life is good
when you're
pain free!*

Utilizing:

- Chiropractic Adjustment
- Therapeutic Medical Massage
- Myofascial Release

We refer and co-manage patients with SEARHC doctors as needed. Insurances accepted.

**(907)
874-3361**

We are here for you; See You Soon!
109 Lynch Street, Wrangell
ArcticChiropracticDoc@gmail.com



COOPER'S CORNER
Specializing in Sassy Stitches

EMBROIDERY DIGITIZING
CROCHET



Find your gifts at
cooperscorneralaska.com
907.305.1026

A Suite Spot B&B

A Suite Spot B&B is conveniently located just one block from downtown Wrangell. We have five B&B rooms. There are peeks at the harbor from our B&B, but the waterfront is in walking distance for a full view. We provide cooked and/or continental breakfast. We include use of the kitchen, dining and living room with your stay.

www.asuitespotbandb.com • asuitespotak@gmail.com
970-535-4357

PO Box 225
206 McKinnon Street
Wrangell, AK 99929

Follow us on Facebook:
A Suite Spot B&B



Sentry Hardware & Marine

Got A Question ...

Need A Hand?

Yes, We Can!



- COMMERCIAL & SPORT
- FISHING GEAR & LICENSES
- HARDWARE & TOOLS
- HOUSEWARES
- TOYS
- MARINE SUPPLIES
- MARINE HYDRAULICS
- LAWN & GARDEN SUPPLIES
- SPORTING GOODS

Mail orders given prompt attention!

408 FRONT ST.

TOLL-FREE IN ALASKA: 800-478-3334

Facebook: @Sentry Hardware & Marine • (907) 874-3336

ACROSS FROM THE BOATYARD HAUL OUT

THE BEST PIZZA IN SE ALASKA



Lunch and Dinner
every day.
Pizza starting
at 4 p.m.

A full service bar
with Karaoke every
Saturday night,
starting at 10 p.m.

Large outdoor deck
and friendly staff.



Hungry Beaver Pizza & Marine Bar

Located near Inner Harbor • 640 Shakes Street
Open 7 days a week
907-874-3005 • Eat In or Take Out



- Lodge Style B&B
- Private Baths
- Beach Access
- Fully Equipped Kitchen
- Free Wifi
- Walking Distance to Town



(907) 874-3225

P.O. Box 927 Wrangell, AK 99929

leslie@grandviewbnb.com



All In Charters offers world class fishing trips, whale watching/sightseeing as well as day trips to Le Conte Glacier.



allincharterswrangell.com

grandviewbnb.com

St. Rose of Lima

Catholic Church



Mass: Sunday at 11 a.m. and 5:30 p.m.

Oldest Catholic Parish in Alaska Est 1879

Third week each month:

Saturday, Vigil at 5:30 p.m. and Sunday at 9 a.m.

120 Church Street • 907-874-3771

www.stroseoflimawrangell.com

CITY MARKET INC
Where Wrangell Shops!
Since 1935

Full Grocery, Meats & Produce
Hot & Cold Deli, Liquor Store,
Fax & Copy

423 Front Street • FREE DELIVERY • (907) 874-3333 • Facebook: @City Market, Inc

*Big Enough to Serve All
Your Shopping Needs
With Small Town Friendliness*



Across from the Boatyard Haul Out

WRANGELL
Parks & Recreation

WORK FOR A LIVING. PLAY FOR A LIFE.

- Outdoor Recreation**
Parks, trails & green spaces provide families, friends & individuals much needed respite. Surround yourself with nature by visiting a park or hiking a trail. Please pick up after your pet.
- Aquatics & Programming**
Aquatics & recreation programming are vital to a healthy community, creating opportunity for social connection, movement and volunteerism.
- Weight Room & Cardio**
Strength training & cardiovascular endurance are two crucial components to living a healthy life.

FIND OUT MORE BY VISITING THE PAR WEBSITE AT WWW.WRANGELLPAR.COM
CALL THE PAR TEAM AT 907-874-2444
USE THE QR CODE FOR DIRECT ACCESS TO OUR WEBSITE

River's Mouth Resale Thrift Shop

.....
907-874-4095
321 Front Street, Back Hall



HOW TO PICK A CHARTER OPERATOR

PLAN EARLY:

Most charter operators are booked many months in advance for key vacation dates.

CONSIDER THE SIZE OF YOUR PARTY:

Some operators can accommodate larger parties, while others prefer to focus on smaller groups.

CONSIDER THE ABILITIES OF YOUR PARTY:

Find out if trips can be paced for elderly or handicapped persons, and what ages of children are welcome.

ASK WHAT TO WEAR:

Some operators furnish gear that others don't.

COAST GUARD - LICENSED CHARTER BOAT SERVICES

Wrangell's Coast Guard-licensed charter boat operators, who advertise here, observe safe boating practices and know the local area best – what to see and what to do. From fishing excursions to sightseeing trips to freight hauling, they can meet all of your boat charter needs.

| | Stikine River sightseeing day trips | Stikine River overnight (camping) | Fishing day trips | Fishing overnight (onboard) | Sightseeing, photography, glaciers, pleasure | Freight hauling | Harbor tours, historic sites, Old Town, etc. | Anan Bear Observatory | Water Taxi |
|--|-------------------------------------|-----------------------------------|-------------------|-----------------------------|--|-----------------|--|-----------------------|------------|
| Alaska Charters & Adventures 907-874-4157, 907-470-4000 www.wrangellalaskafishing.com | ● | ● | ● | ● | ● | ● | ● | ● | ● |
| Alaska Legacy Charters 907-660-7511 info@alaskalegacycharters.com https://alaskalegacycharters.com | ● | ● | | | ● | ● | ● | ● | ● |
| Alaska Vistas 907-874-3006 info@alaskavistas.com www.alaskavistas.com | ● | ● | | | ● | | ● | ● | ● |
| Alaska Waters Inc. 907-305-0495 info@alaskawaters.com https://alaskawaters.com | ● | | | | ● | | ● | ● | |
| Breakaway Adventures 907-874-2488 info@breakawayadventures.com www.breakawayadventures.com | ● | ● | | | ● | ● | ● | ● | ● |
| Fish Wrangell 907-209-2190 marlin@fishwrangell.com www.fishwrangell.com | | | ● | | | | | | |
| Stickeen Wilderness Adventures 907-874-2085 stickenwildernessadventures@hotmail.com www.stickeenwildernessadventures.com | ● | | | | ● | ● | | ● | ● |
| Summit Charters 907-305-0416 johtaylorandsonsinc@gmail.com www.summitcharters.com | ● | | | | ● | ● | | | ● |
| Tight Line River Tours 907-388-8137 tightlinrivertraveltours@gmail.com Facebook: @Tight Line River Tours | ● | ● | ● | | ● | ● | ● | | ● |

WRANGELL ISLAND TONGASS NATIONAL FOREST



WRANGELL BUSINESS DIRECTORY

THIS GUIDE IS SPONSORED BY ADVERTISERS IN THE WRANGELL GUIDE

* DENOTES BUSINESSES WITHOUT A STOREFRONT

1. **56 NORTH:** 5 Front St., 907-305-0495, Facebook: @56North
2. **A SUITE SPOT:** 206 McKinnon St., 907-535-4357, www.asuitespotbandb.com
3. **ALASKA CHARTERS & ADVENTURES:** 107 Stikine Ave. & 1003 Case Ave., 907-874-4157, www.alaskaupclose.com
4. **ALASKA VISTAS:** 103 Front St., 907-874-3006, www.alaskavistas.com
5. **ALASKA WATERS:** 5 Front St., Unit 1, 907-305-0495, www.alaskawaters.com
6. **ALASKAN ARTIST:** 107 Stikine Ave. and 1003 Case Ave., 907-874-3508, www.marineartist.com
7. **ALASKA MARINE HIGHWAY SYSTEM:** 301 McCormack Street, 907-874-3711, dot.alaska.gov/amhs/
- * **ANCHOR PROPERTIES:** 907-470-0085, www.apalaska.com
8. **ANGERMAN'S, INC.:** 2 Front St., 907-874-3640, Facebook: @Angerman's Inc.
9. **ARCTIC CHIROPRACTIC AND MASSAGE:** 109 Lynch St., 907-874-3361, www.arcticchiropractic.com
10. **BREAKAWAY ADVENTURES:** 106 Lynch St., 907-874-2488, www.breakawayadventures.com
- * **BREAKAWAY FERRY AND FREIGHT, LLC:** 907-470-3360, info@bffwrangellak.com
11. **BUNESS BROS, INC.:** 18 Front St., 907-874-3811, Facebook: @Buness Bros Inc.
12. **CANOE LAGOON OYSTERS:** 106 Lynch Street, 928-301-7087, www.freshalaskaoysters.com
13. **CHIEF SHAKES TRIBAL HOUSE:** Shakes Island, 907-874-4304, www.wcatribe.org
14. **CITY MARKET:** 423 Front St., 907-874-3333, Facebook: @City Market, Inc.
15. **CITY OF WRANGELL:** 205 Brueger St., 907-874-2381, www.wrangell.com
- * **COOPER'S CORNER:** 907-305-1026, etsy.com/shop/CoopersCornerAlaska
- * **FISH WRANGELL:** 907-209-2190, www.fishwrangell.com
16. **FIRST BANK:** 224 Brueger St., 907-874-3363, www.firstbankak.com
17. **FORGET ME NOT LODGING:** 203 Weber St., 208-818-6925, www.forgetmenotlodging.com
18. **GRAND VIEW BED & BREAKFAST:** 1.9 Mile Zimovia Highway, 907-874-3225, www.grandviewbnb.com
19. **HARBOR VIEW SELF STORAGE:** 1068 Zimovia Highway, 907-796-9007, www.harborviewstorage.net
- * **HERITAGE FISHERIES:** 907-874-4157, Facebook: @HeritageFisheriesAK
20. **HERITAGE HARBOR BOATHOUSE:** 238 Berger St., 360-393-7354, airbnb.com/rooms/14789513
- * **HOMEPORTELECTRONICS:** 907-772-3100, www.homeportelectronics.com
21. **HUNGRY BEAVER PIZZA & MARINE BAR:** 604 Shakes St., 907-874-3005, Facebook: @ Marine Bar
22. **ISLAND ESCAPE RENTAL CARS:** Wrangell Airport, 907-874-3975, www.wrgislandescape.com
23. **ISLAND OF FAITH LUTHERAN CHURCH:** 211 Second St., 907-874-2743, www.islandoffaith.weebly.com
24. **JAVA JUNKIE:** 103 Front St., 907-874-3006, Facebook: Java Junkie
25. **JOHNSON'S BUILDING SUPPLY, INC.:** 2.5 Mile Zimovia Highway, 907-874-2375, Facebook: @Johnson's Building Supply, Inc.
26. **KSTK RADIO:** 202 St. Michaels St., 907-874-2345, www.kstk.org
27. **MT. DEWEY SUNSET BED & VIEW:** 111 Mt. Dewey Lane, 907-305-0029, Facebook: Mt. Dewey Sunset Bed & View
28. **MIDNIGHT OIL:** 124 Front St., www.akmidnightoil.com
29. **MUSKEG MEADOWS:** 0.5 Mile Ishiyama Drive, 907-874-4653, www.muskegmeadows.com
30. **JAMES & ELSIE NOLAN CENTER, VISITOR CENTER & MUSEUM:** 296 Campbell Drive, 907-874-3699, www.wrangell.com/cc
31. **OTTESEN'S ACE HARDWARE:** 104 Front St., 907-874-3377, Facebook: @Ottesen's Ace Hardware
32. **RAYME'S BAR:** 532 Front St., 907-874-3442, Facebook: @Rayme's Bar
33. **REEVES GUEST HOUSE:** 3.75 Mile Zimovia Highway, 907-305-0657, www.airbnb.com/rooms/42153824
34. **RELIANCE RENTALS:** 1214 Peninsula St., 907-305-1211, www.airbnb.com/rooms/17815042
- * **RITCHIE'S ROCKS:** 907-305-1211, www.ritchiesrocks.com
35. **RIVER'S MOUTH RESALE:** 321 Front St., Back Hall, 907-874-4095, Facebook: @River's Mouth Resale
36. **RIVER'S MOUTH TRADING COMPANY:** 321 Front St., 888-505-3828, www.riversmouth.com
37. **SALVATION ARMY:** 611 Zimovia Highway, 907-874-3753, wrangell.salvationarmy.org
38. **SENTRY HARDWARE & MARINE:** 408 Front St., 907-874-3336, Facebook: @Sentry Hardware & Marine
39. **SEARHC:** 232 Wood St., 907-874-7000, www.searhc.org
40. **ST. PHILIP'S EPISCOPAL CHURCH:** 446 Church St., 907-874-3047, www.stphilipswrangell.com
41. **ST. ROSE OF LIMA CATHOLIC CHURCH:** 120 Church St., 907-874-3771, www.stroseoflimawrangell.com
42. **STIKINE DRUG STORE:** 202 Front St., 907-874-3422, www.stikinedrug.com
43. **STIKINE INN AND RESTAURANT:** 105 Stikine Ave., 907-874-3388, www.stikineinn.com
- * **SUMMIT CHARTERS:** 907-305-0416, www.summitcharters.com
44. **SUNRISE AVIATION:** Wrangell Airport, 907-874-2319, Facebook: @Sunrise Aviation Inc.
45. **SWEET TIDES:** 305 Front St., 907-874-3900, Facebook: @sweettideswrangell
- * **TIGHT LINE RIVER TOURS:** 907-388-8137, Facebook: @Tight Line River Tours
- * **TINY'S TAXI:** 907-305-0789, Facebook: @Tiny's Taxi
46. **TK'S MINI-MART:** 930 Zimovia Highway, 907-874-2361, Facebook: @Tk's Mini-Mart
47. **WRANGELL CHAMBER OF COMMERCE:** 107 Stikine Ave., 907-874-3901, Facebook: @Wrangell Chamber of Commerce
48. **WRANGELL ELKS LODGE NO. 1595:** 103 Front St., 907-874-3716, Facebook: @B.P.O.E #1595 - Wrangell Elks Lodge
49. **WRANGELL EXTENDED STAY:** 312 Stikine Ave., 907-305-1117, www.wrangellextendedstay.com
- * **WRANGELL HISTORY:** WrangellHistory.com
50. **WRANGELL IGA:** 223 Brueger St., 907-874-2341, www.wrangelliga.com
51. **WRANGELL PARKS & RECREATION:** 320 Church St., 907-874-2444, www.wrangellrec.com
- * **WRANGELL REAL ESTATE:** 907-874-4445, www.movetowrangell.com
52. **WRANGELL SENTINEL:** 205 Front St., 907-874-2301, wrangellsentinel.com
53. **YOU ESCAPE ME:** 215 Front St., 2nd floor, 907-305-0555, www.bookeo.com/youescapeme



29

To Shooting Range & Kayak & Canoe Ramp

Volunteer Park Nature Trail

Baseball Diamonds

To the airport

22 Island Escape Rental Cars

44 Sunrise Aviation

Bennett Street

Ishiyama Drive (Spur Road)

Second Avenue

First Avenue

Etolin Street

Council Drive

Council Drive

Pine Street

Cedar Circle

St. Michaels

Third Street

Howell Avenue

ABC

Wrangell Avenue

Zimovia Avenue

Zimovia Hwy

37

Chief Shakes Grave

Case Avenue

Weber Street

St. Michaels

17

26

D

Church Street

40

32

Case Avenue

Mt Dewey Trail Extension

Mt. Dewey Trail Head

Shakes Street

21



Marine Service Center

Harbormaster's Office

Seaplane float

DOWNTOWN HARBORS

Mission St

Reid Street

Church Street

St. Michaels

38

14

36

35

30

50

16

53

52

10

12

9

15

48

24

1

4

5

51

C

41

B

45

31

28

31

11

8

43

3

47

6

42

10

12

9

15

48

24

1

4

5

43

3

47

6

42

10

12

9

15

48

24

1

4

5

43

3

47

6

42

10

12

9

15

48

24

1

4

5

43

3

47

6

42

10

12

9

15

48

24

1

4

5

43

3

47

6

42

10

12

9

15

48

24

1

4

5

43

3

47

6

42

10

12

9

15

48

24

1

4

5

43

3

47

6

42

10

12

9

15

48

24

1

4

5

43

3

47

6

42

10

12

9

15

48

24

1

4

5

43

3

47

6

42

10

12

9

15

48

24

1

4

5

43

3

47

6

42

10

12

9

15

48

24

1

4

5

43

3

47

6

42

10

12

9

15

48

24

1

4

5

43

3

47

6

42

10

12

9

15

48

24

1

4

5

43

3

47

6

42

10

12

9

15

48

24

1

4

5

43

3

47

6

42

10

12

9

15

48

24

1

4

5

43

3

47

6

42

10

12

9

15

48

24

1

4

5

43

3

47

6

42

10

12

9

15

48

24

1

4

5

43

3

47

6

42

10

12

9

15

48

24

1

4

5

43

3

47

6

42

10

12

9

15

48

24

1

4

5



LEGEND

| | | |
|-------------------|-----------------------|----------------------|
| Elementary school | Pool & Community Gym | Emergency Services |
| Forest Service | Post Office | Hiking Trails |
| High School | Public Restrooms | Churches (See right) |
| Hospital | Nolan Center & Museum | |
| Library | Totem Poles | |

- ### WRANGELL CHURCHES
- A. Island of Faith Lutheran Church-ELCA
 - B. St. Rose of Lima Catholic Church
 - C. First Presbyterian Church
 - D. St. Philip's Episcopal Church
 - E. TouchPoint Alaska Ministries
 - F. Wrangell Seventh-day Adventist Church
 - G. The Salvation Army
 - H. Harbor Light Assembly of God
 - I. Bible Baptist Church
 - J. Church of Jesus Christ of Latter-day Saints

TRAVEL OUTSIDE THE LINES
WRANGELL

WRANGELL CONVENTION
& VISITOR BUREAU
P.O. BOX 531
WRANGELL, ALASKA, 99929

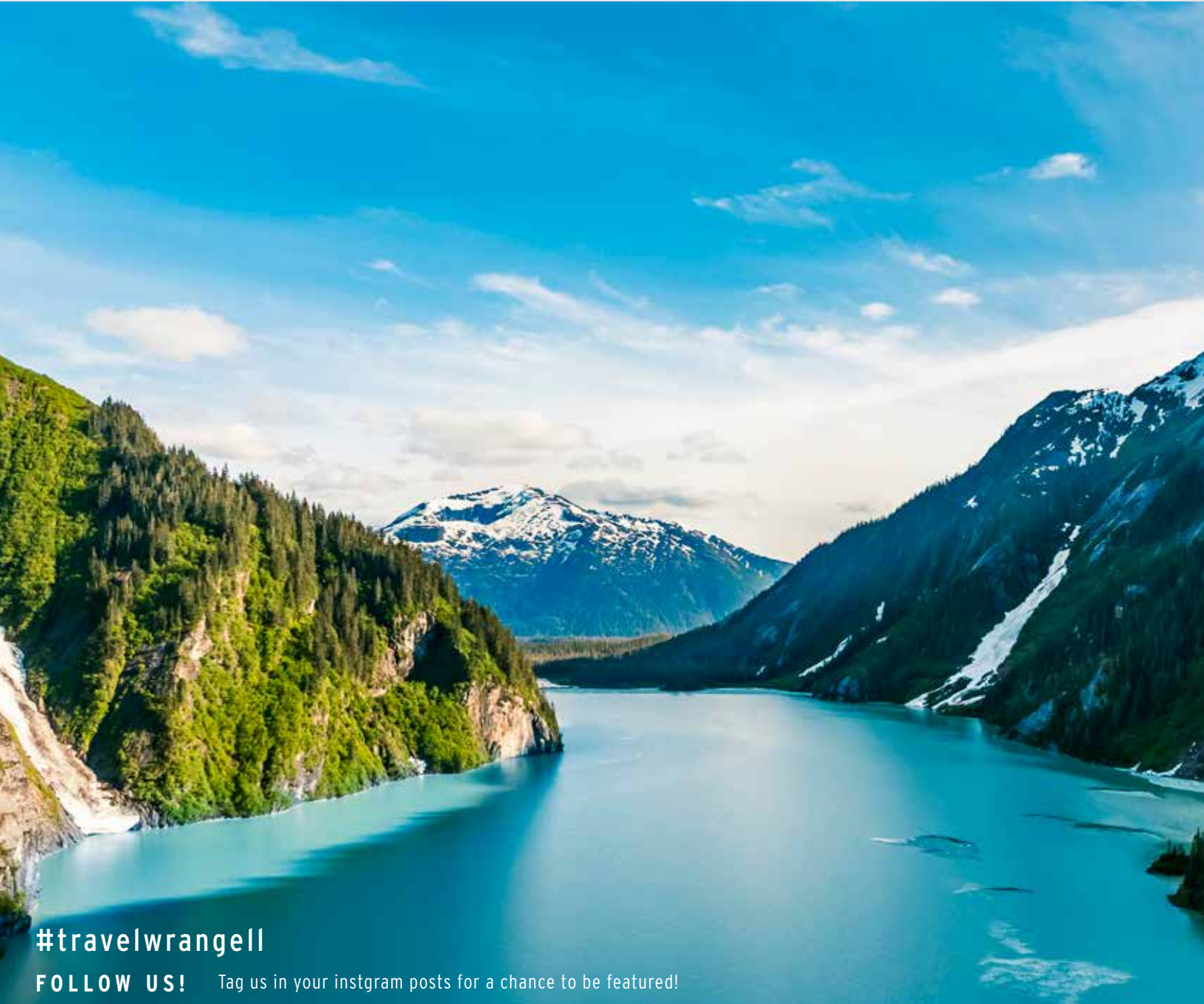
INFO@TRAVELWRANGELL.COM



(907) 874 2829



TRAVELWRANGELL.COM



#travelwrangell

FOLLOW US! Tag us in your instagram posts for a chance to be featured!

 facebook.com/travelwrangell  @travelwrangell  @travelwrangellak  @travelwrangell

Published in partnership with Travel Wrangell and the Wrangell Sentinel

Neal Alfano (@nealalfano)